

# Woodhouse Academy

## Safeguarding Policy

Reviewed: Summer 2016

To be reviewed: Summer 2017

### Safeguarding and promoting the welfare of children- definition

“Protecting children from maltreatment; preventing impairment of children’s health or development; ensuring that children grow up in circumstances consistent with provision of safe and effective care; and taking action to enable all children to have the best outcomes”.

### Introduction

Woodhouse Academy recognises its legal duty under s175 Education Act 2002 and the 1989 Children Act and takes seriously its responsibilities to promote and safeguard the interests of all pupils. The school recognises that effective child protection work requires sound procedures, good inter-agency co-operation and a workforce that is competent and confident in responding to child protection situations – identifying, assessing and supporting those children who are suffering harm.

This procedures document provides the basis for good practice within the school for Child Protection work. It should be read in conjunction with Staffordshire Safeguarding Children Board Inter-Agency Child Protection Policies and Procedures. These are in keeping with relevant national procedures and reflect what the Directorate considers to be safe and professional practice in this context.

This policy has been developed in accordance with the principles established by the Children Acts 1989 and 2004; the Education Act 2002, and in line with government publications: ‘Keeping Children Safe in Education’ 2016, Revised Safeguarding Statutory Guidance 2 ‘Framework for the Assessment of Children in Need and their Families’ 2000, ‘What to do if You are Worried a Child is being Abused’ 2015.

This document also seeks to make the professional responsibilities clear to all staff (teaching and non teaching) governors and volunteers, temporary and supply staff to ensure that statutory and other duties are met in accordance with Staffordshire Safeguarding Children Board requirements and procedures. All staff and volunteers need to have read and be familiar with the Policy. **All staff** will have read part one and Annex A of the ‘Keeping Children Safe in Education 2016’. The Principal and Governing body will ensure that mechanisms are in place to assist staff to understand and discharge their roles and responsibilities.

This Safeguarding Policy will be reviewed annually by the governing body. It is available on the school website and copies may be obtained from the school office.

The term DSL refers to 'Designated Safeguarding Lead', the person leading safeguarding within the school, term DO refers to the Designated Officer who is a county safeguarding officer (form LADO, Local authority designated officer).

## **Safeguarding and Promoting the Welfare of Children**

Safeguarding and promoting the welfare of children is **everyone's** responsibility. **Everyone** who comes into contact with children and their families and carers has a role to play in safeguarding children. In order to fulfil this responsibility effectively, all professionals should make is child-centred. This means that they should consider, at all times, what is in the **best interests** of the child. If children and families are to receive the right help at the right time, **everyone** who comes into contact with them has a role to play in identifying concerns, sharing information and taking prompt action.

The definition for Safeguarding and promoting the welfare of children in Working Together to Safeguard Children 2015 is:

- protecting children from maltreatment;
- preventing impairment of children's health or development;
- ensuring children grow up in circumstances consistent with the provision of safe and effective care;
- taking action to enable all children to have the best outcomes

## **Underpinning values**

Safeguarding can happen anywhere and staff should be alert to possible concerns being raised in this school.

Where there is a safeguarding issue, Woodhouse Academy will work in accordance with the principles outlined in the Staffordshire Safeguarding Children Board Inter-agency Child Protection procedures:

- A child's welfare is paramount. Each child has a right to be protected from harm and exploitation and to have their welfare safeguarded.
- Each child is unique. Action taken by child welfare organisations should be child-centred, taking account of a child's cultural, ethnic and religious background, their gender, their sexual orientation, their individual ability and any special needs.
- Children, parents and other carers should be made aware of their responsibilities and their rights, together with advice about the power of professionals to intervene in their family circumstances.
- Parents will be advised about the School Safeguarding Policy in welcome meetings. A copy of the Policy is available on the school website and on request at the school office.
- Individual family members must be involved in decisions affecting them. They must be treated with courtesy and respect and with due regard given to working with them in

a spirit of partnership in safeguarding children's welfare. However, it may not be appropriate to advise parents/carers immediately about a referral depending on circumstances and the advice given by Children's Social Care. The welfare of the child is paramount in such situations.

- Each child has a right to be consulted about actions taken by others on his/her behalf in an age appropriate way. The concerns of children and their families should be listened to and due consideration given to their understanding, wishes and feelings. However, it may not always be possible to respect a child/carer's request for confidentiality. If a child may be at risk of significant harm, there is a duty on the school to share information with children's social care. This should be explained to the child and appropriate reassurance given when the child has expressly asked for confidentiality in these circumstances.
- Personal information is usually confidential. It should only be shared with the permission of the individual concerned (and/or those with parental responsibility) unless the disclosure of confidential personal information is necessary in order to protect a child or promote their welfare. In all circumstances, information must be confined to those people directly involved in the professional network of each individual child and on a strict "need to know" basis.
- Professionals should be aware of the effects of outside intervention upon children, upon family life and the impact and implications of what they say and do.
- Explanations by professionals to children, their families and other carers should be plainly stated and jargon-free. Unavoidable technical and professional terminology should be explained in simple terms.
- Sound professional practice is based upon positive inter-agency collaboration, evidence-based research and effective supervision and evaluation.
- Early intervention in providing support services utilising the Early Help Assessment Process and if necessary an assessment under Section 17 of the Children Act (1989). This is an important principle of practice in inter-agency arrangements for safeguarding the welfare of children.

### **Thresholds for Intervention:**

#### **Early Support: Early Help Assessment (EHA)**

Practitioners should complete an Early Help Assessment (EHA) when:

- The support of more than one additional agency is needed to meet the child or young person's needs.

All staff receive EHA awareness training and **all** staff should be prepared to identify children who may benefit from early help. Staff should discuss children who appear to have additional needs with the Designated Safeguarding Lead, the child and parents. The school will need to obtain parental/pupil consent for an EHA to be completed. The school EHA co-ordinator may need to make a referral directly to other agencies, or request the support of Staffordshire County Council Local Support Team (LST). School staff follow the guidance of the SSCB Threshold Document - accessing the right help at the right time ([www.staffsscb.org.uk](http://www.staffsscb.org.uk) – procedure 1E)

### **Child in Need - S17 of the Children Act 1989:**

A 'Child in Need' referral should be considered where the needs of the child are unlikely to be met under a EHA, such as a child with complex disabilities, when a social work led assessment is required.

Section 17 of the Children Act says that an assessment for services should be undertaken by the Local Authority in the following circumstances:

- Child(ren) are unlikely to achieve or maintain, or to have opportunity to achieve or maintain a reasonable standard of health or development, without the provision of services by a local authority.
- Their health or development is likely to be impaired, or further impaired without the provision of such services.
- They are disabled.

If the Designated Safeguarding Lead considers that the welfare concerns indicate that this is a 'Child in Need', he/she will speak with parents / young person and obtain their consent for referral to First Response (see below) to request an assessment.

Appropriate school staff should be invited to participate in Child in Need (CIN) meetings convened by children's social care when children are deemed to require section 17 services.

Some children in 'acute need' (see SSCB Threshold guidance) may require Child in Need section 17 support. This could include children who self harm or disclose an intent to commit suicide (SSCB procedure 4U).

### **Child Protection:**

S47 of the Children Act 1989 says the Local Authority has a statutory duty to investigate when there is reasonable cause to suspect that a child is suffering, or is likely to suffer, significant harm due to the actions or inactions of others. School staff do not investigate whether a child has been abused. This is the duty of Social workers from the Safeguarding team and the police. School staff refer reasonable concerns which indicate that a child may be at risk of significant harm.

It is the 'significant harm' threshold that justifies statutory intervention into family life. A professional making a child protection referral under S.47 must therefore provide information which clearly outlines that a child is suffering or likely to suffer significant harm. It is not possible to rely on one absolute criterion when judging what constitutes significant harm. Consideration of the severity of ill-treatment may include the extent of the harm suffered, the context within which it occurred and its duration. Significant harm may also arise from a combination of significant events which are both acute and long standing and which may impair the child's physical, psychological and social development.

In order to both understand and evidence 'significant harm', it is necessary to consider the family context, together with the child's development within their wider social and cultural environment. It is also necessary to consider any special needs, e.g. medical condition, communication difficulties or disability that may affect the child's development and care within the family. The nature of harm, in terms of ill-treatment or failure to provide adequate care also needs consideration alongside the impact on the child's health and development and the adequacy of care provided.

**If staff have concerns about any child they should:**

- **Make them known to the schools designated or deputy designated safeguarding leads – Mrs Butler, Mr Reynolds, Mrs Farr and Mrs Aldington**
- **Record the concerns on the school's concern form in the filing cabinet in the staff room.**

**(See Appendix 1 – recognising signs of abuse)**

It is important to recognise that safeguarding events are rarely standalone events that can be covered by one definition or label. In most cases multiple issues will overlap with one another. All staff should have an awareness of specific safeguarding issues as set out in paragraph 43 of 'Keeping children safe in education, 2016'. All staff should be aware that safeguarding issues can manifest themselves via peer on peer abuse.

**These concerns may include:**

**Physical abuse:**

May involve hitting, shaking, throwing, poisoning, burning or scalding, drowning, suffocating, or otherwise causing physical harm to a child. Physical harm may also be caused when a parent or carer fabricates the symptoms of, or deliberately induces illness in a child (*Working Together to Safeguard Children' 2015*).

**Emotional abuse:**

Is the persistent emotional maltreatment of a child such as to cause severe and persistent adverse effects on the child's emotional development? It may involve conveying to children that they are worthless or unloved, inadequate, or valued only insofar as they meet the needs of another person. It may include not giving the child opportunities to express their views, deliberately silencing them or 'making fun' of what they say or how they communicate. It may feature age or developmentally inappropriate expectations being imposed on children. These may include interactions that are beyond the child's developmental capability, as well as over protection and limitation of exploration and learning, or preventing the child from participating in normal social interaction. It may involve seeing or hearing the ill treatment of another. It may involve serious bullying (including Cyber bullying), causing children frequently to feel frightened or in danger, or the exploitation or corruption of children. Some level of emotional abuse is involved in all types of maltreatment of a child, though it may occur alone. (*Working Together to Safeguard Children' 2015*).

### **Sexual abuse including child sexual exploitation**

Involves forcing or enticing a child or young person to take part in sexual activities, not necessarily involving a high level of violence, whether or not the child is aware of what is happening. The activities may involve physical contact, including assault by penetration (e.g. rape, or oral sex) or non penetrative acts such as masturbation, kissing, rubbing and touching outside of clothing, They may also include non-contact activities, such as involving children in looking at, or in the production of, sexual online images, watching sexual activities, or encouraging children to behave in sexually inappropriate ways, or grooming a child in preparation for abuse (including via the internet). Sexual abuse is not solely perpetrated by adult males. Women can also commit acts of sexual abuse, as can other children. (*Working Together to Safeguard Children' 2015*).

### **Neglect:**

Is the persistent failure to meet a child's basic physical and/or psychological needs, likely to result in the serious impairment of the child's health or development? Neglect may occur during pregnancy as a result of maternal substance abuse.

Once a child is born, neglect may involve a parent or carer failing to:

- Provide adequate food, clothing and shelter (including exclusion from home or abandonment)
- Protect a child from physical and emotional harm or danger
- Ensure adequate supervision (including the use of inadequate care-givers)
- Ensure access to appropriate medical care or treatment.

It may also include neglect of, or unresponsiveness to, a child's basic emotional needs (*Working Together to Safeguard Children' 2015*).

### **Identifying cases of female genital mutilation (FGM) and Forced Marriage (see Appendix 2)**

There are many different types of abuse but there are some that staff may be initially less aware of. Female genital mutilation (FGM) and Forced Marriage fall into this category. The school does have measures in place to safeguard against this type of abuse. Any indications that FGM or Forced Marriage are imminent, or have already taken place, will be dealt with under the child protection procedures outlined in this policy. In support of this provision, the school will do everything that it can to ensure that:

- the school is an 'open environment', where students feel able to discuss issues that they may be facing;
- the Designated Safeguarding Lead and deputy are aware of the issues surrounding FGM and Forced Marriage;
- advice and signposts are available for accessing additional help, e.g. the NSPCC's helpline, ChildLine services, Forced Marriage Unit
- awareness raising about FGM is incorporated in the school's safeguarding training.

If there is a disclosure of abuse of this kind, or staff are concerned for any other reason, they

are advised:

- to alert the school's DSL to their concerns. This member of staff will then refer concerns to social care, who will inform the police if they need assistance. If a pupil has disclosed that they are at risk in this way, the case will still be referred to social care even if it is against the pupil's wishes.
- **not** to consult or discuss with the pupil's parents or family, or others within the community;

If a **teacher**, in the course of their work in the profession, discovers that an act of Female Genital Mutilation appears to have been carried out on a girl under the age of 18 the **teacher** must report this to the police.

### **Making referrals**

If a staff member has any **concerns** about a child (as opposed to a child being in immediate danger) they will need to decide what action to take. Where possible, there should be a conversation with the DSL to agree a course of action, although any staff member can make a referral to children's social care. A written record of your concerns, discussions and decisions and the reasons for those decisions should be made using the schools internal recording form.

**If a child is in immediate danger, or is at risk of harm, a referral should be made to children's social care and/or the police immediately.** Anyone can make a referral.

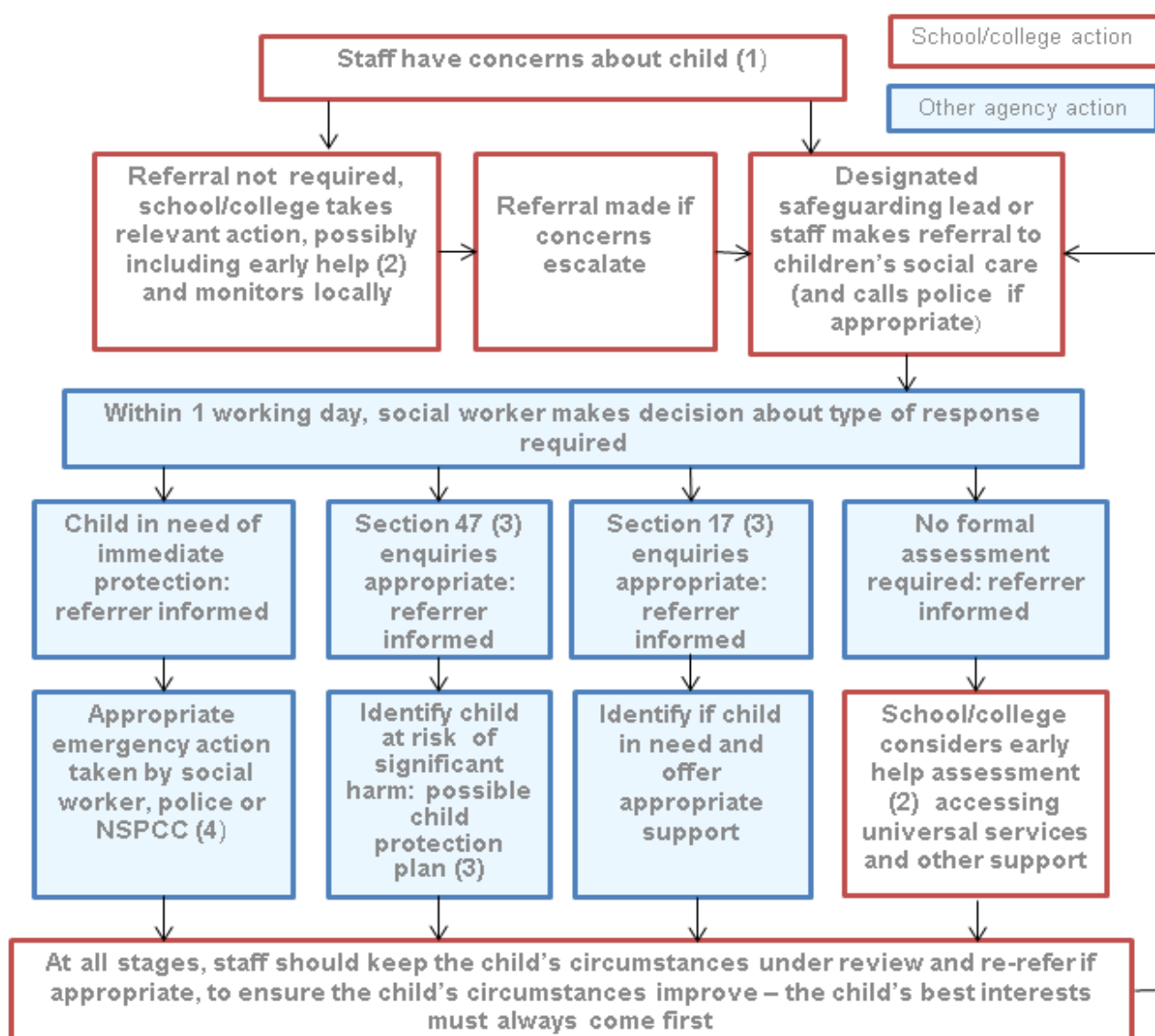
If a **teacher**, in the course of their work in the profession, discovers that an act of Female Genital Mutilation appears to have been carried out on a girl under the age of 18 the **teacher** must report this to the police.

Where referrals are not made by the DSL the DSL should be informed, as soon as possible, that a referral has been made. The local authority should make a decision within one working day of a referral being made about what course of action they are taking and should let the referrer know the outcome. Staff should follow up on a referral should that information not be forthcoming. If the child lives in an authority outside of Staffordshire, the matter will be referred by the DSL to children's social care in that area.

For referral to First Response phone 0800 1313126 and speak to the operator. You will need to follow this up with written confirmation on the Multi-agency referral form (MARF) within 48 hours. The multi-agency form is available from the SSCB website (procedure 3B):

[www.staffsscb.org.uk](http://www.staffsscb.org.uk)

## Actions where there are concerns about a child





## **Confidentiality**

Confidentiality is an issue that needs to be understood by all those working with children, particularly in the context of child protection. This is a complex area and involves consideration of a number of pieces of legislation.

You can never guarantee confidentiality to a child as some kinds of information may need to be shared with others. A suggested form of words that may help when talking to children is as follows:

“I will keep our conversation confidential and agree with you what information I can share, unless you tell me something that will affect your personal safety or that is illegal, but I will tell you if I am going to pass information on and who to.”

Professionals can only work together to safeguard children if there is an exchange of relevant information between them. This has been recognised in principle by the courts. However, any disclosure of personal information to others, included social service departments, must always have regard to both common and statute law.

Normally, personal information should only be disclosed to third parties (including other agencies) with the consent of the subject of that information (Data Protection Act 1998 European Convention on Human Rights, Article 8). Wherever possible, consent should be obtained before sharing personal information with third parties. In some circumstances, however, consent may not be possible or desirable but the safety and welfare of the child dictate that the information should be shared.

The law requires the disclosure of confidential information necessary to safeguard a child or children. Under Section 47 of the Children Act 1989 statutory agencies have a duty to co-operate. Therefore, if the Police or Social Care/Services are conducting a Section 47 investigation under the 1989 Children Act, staff must share requested information relevant to the investigation. Legal advice should be sought if in doubt from the County Legal Services Department.

When children transfer to a new school at any time other than key transition points (e.g. move to primary or high school), it may be necessary to inform other partners. A process is in place for informing the school nurse team in these circumstances.

## **Talking to and listening to children**

If a child chooses to disclose, you SHOULD:

- be accessible and receptive;
- listen carefully and uncritically at the child's pace;
- take what is said seriously;
- reassure the child that they are right to tell;
- tell the child that you must pass this information on;
- make a careful record of what was said.

You should NEVER:

- take photographs of injuries;
- examine marks/ injuries solely to assess whether they may have been caused by abuse (there may be a need to give appropriate first aid)
- investigate or probe, aiming to prove or disprove possible abuse – never ask leading questions;
- make promises to children about confidentiality or keeping ‘secrets’;
- assume that someone else will take the necessary action;
- jump to conclusions or react with shock, anger or horror;
- speculate or accuse anybody;
- confront another person (adult or child) allegedly involved;
- offer opinions about what is being said or about the persons allegedly involved;
- forget to record what you have been told;
- fail to pass the information on to the correct person;
- ask a child to sign a written copy of the disclosure or a ‘statement’.

For children with communication difficulties or who use alternative/augmented communication systems, you may need to take extra care to ensure that signs of abuse and neglect are identified and interpreted correctly, but concerns should be reported in exactly the same manner as for other children.

### **Record keeping**

Well kept records are essential in situations where it is suspected or believed that a child may be at risk from harm.

Records should:

- state who was present, time, date and place;
- use the child’s words wherever possible;
- be factual/state exactly what was said;
- differentiate clearly between fact, opinion, interpretation, observation and/or allegation;
- be written in ink and signed by the recorder;

Records about child protection or pertaining to welfare concerns or issues, including EHA paperwork, will be retained securely and separately to the curriculum records of the child. If the child moves to another school or education setting, these records will be sent in a timely and secure manner to the DSL of the receiving school.

### **Attendance at Child Protection Conferences**

The DSL or their deputy will be expected to attend the initial Child Protection Conference and Reviews, and provide a written report. A suggested template for this report is available on:

<http://education.staffordshire.gov.uk/PupilSupport/SEN/Services/safeguarding/designatedstaff/>

Parents should be informed of what is in the report as there should be no surprises about the information shared at Conference.

If a child is made subject to a Child Protection Plan it may be more relevant for the class teacher or head of year to attend the subsequent core group meetings and they will be given appropriate support around safeguarding issues by the school's DSL.

### **Protecting yourself against allegations of abuse**

You should seek to keep your personal contact with children under review and seek to minimise the risk of any situation arising in which misunderstandings can occur. The following sensible precautions can be taken when working alone with children:

- work in a room where there is a glass panel in the door or leave the door open
- Make sure that other adults visit the room occasionally.
- Avoid working in isolation with children unless thought has been given to safeguards.
- Never give out personal mobile phone numbers or private e-mail addresses
- Do not give pupils lifts home in your car (unless this has been specifically agreed by senior management)
- Do not arrange to meet pupils outside of school hours
- Never 'befriend' or chat to pupils or ex-pupils below the age of 19 on social network sites

Under the Sexual Offences Act 2003 it is a criminal offence for anyone working in an education setting to have a sexual relationship with a pupil even when the pupil is over the age of consent but under 18 years of age.

Any use of physical force or restraint against pupils will be carried out and documented in accordance with the relevant physical restraint policy. If it is necessary to use physical action to prevent a child from injury to themselves or others, parents will be informed.

Children will not be punished by any form of hitting, slapping, shaking or other degrading treatment.

### **Recruitment, supervision and training for staff**

When recruiting new members of staff the school follows the statutory government guidance in Keeping Children Safe in Education 2016, and has due regard to the Safeguarding Vulnerable Groups Act 2006 and The Protection of Freedoms Act.

The school ensures that enhanced DBS checks are undertaken in line with government guidance, that appropriate references are obtained and that qualifications are verified. Enhanced DBS checks are in place for all Governors. Accredited Safer Recruitment training has been undertaken by Senior members of staff and appropriate Governors who sit on recruitment panels in accordance with statutory guidance.

Internal references are taken for internal appointments in line with government statutory guidance. Newly appointed staff and volunteers will have a robust induction into the child protection procedures when they join the school. They will be made aware of the Staffordshire Safeguarding Children Board procedures ([www.staffsscb.org.uk](http://www.staffsscb.org.uk)) as part of that induction

programme, and be given a copy of the school Safeguarding Policy. They will also attend the Level 1 Safeguarding and Promoting the Welfare of Children and Young People training within 6 months of joining the school. The initial Level One Child Protection training given to each member of the organisation will be updated every three years and recorded. Staff and volunteers will be given Safer Working Practice guidance when joining the school. Any reason for staff to be having personal, social contact with pupils at the school must be explained to the head teacher with the rationale and any safeguarding actions required will be recorded.

**All** Staff and governors have safeguarding and child protection awareness training updated by the DSL as required, but at least annually. Through training, all staff are made aware of the early help process, their role in it and the process for making referrals to children's social care. Staff are aware of school guidance for their use of the internet, social networking sites and mobile technology.

Any staff member, volunteer or governor who becomes the subject of a police investigation in relation to physical or sexual offences against adults or children, or are charged with such a criminal offence, must inform the head teacher. Staff must disclose any convictions, cautions, court orders, reprimands and warnings which may affect their suitability to work with children whether received before, or during their employment at the school. The head teacher will discuss any potential safeguarding matters with the LADO and any required action will be agreed.

Any staff member, volunteer or governor whose own children become subject to child protection investigations must inform the head teacher. The head teacher will discuss with the Designated Officer (DO) in regard to procedures for dealing with allegations against persons who work in a position of trust with children. Appropriate action will be agreed.

The Designated and Deputy Designated Safeguarding Lead will attend accredited Safeguarding Courses at Level Two and above at least every 2 years in order to maintain continuous professional development and comply with statutory guidance and the SSCB training strategy.

### **Allegations of abuse against a person working in a position of trust**

Children can be the victims of abuse by those who work with them in any setting. All allegations of abuse of children carried out by any staff member or volunteer is therefore taken seriously.

Staff have a professional duty to report concerns about the conduct of other adults working in the school if there are indications that a child or children could be at risk of harm. Adults working in this school are encouraged to raise any concerns about conduct or practice so that this can be addressed appropriately. Allegations of abuse made against adults working in the school, whether historical or current, should be reported to the DSL or Headteacher (or, if the allegation is against the Headteacher, it should be reported to the Chair of Governors). All concerns raised by staff will be taken seriously. Adults working in the school are also able to follow the 'Whistle Blowing Policy' if they feel unable to follow standard procedures relating to an allegation against staff. (Please ask the school office for a copy of the schools' Whistle Blowing Policy)

In line with government guidance and SSCB procedures, the Head / Chair of Governors will contact a DO to discuss the allegation if the concerns are that an adult in a position of trust has:

- behaved in a way that has harmed a child, or may have harmed a child;
- possibly committed a criminal offence against or related to a child;
- behaved towards a child or children in a way that indicates he or she would pose a risk of harm if they work regularly or closely with children

*(Dealing with allegations of Abuse Against teachers and Other Staff –DFE statutory guidance 2012)*

This initial discussion will establish the validity of any allegation under SSCB procedures ([www.staffsscb.org.uk](http://www.staffsscb.org.uk) procedure 4A) and if a child protection safeguarding referral is required due to a child having suffered or being at risk of suffering 'significant harm'. If this is the case a referral will be raised with the relevant Safeguarding team and a section 47 child protection strategy meeting will be convened that the Head / Chair should attend.

If an individual child is not identified but there are concerns about the behaviour of a person in a position of trust which require consideration by other agencies or organisations, the DO will convene a Joint Evaluation Meeting (JEM) to consider the issues and any action required.

The decision of the strategy/Joint evaluation meeting could be:

- investigation by children's social care
- police investigation if there is a criminal element to the allegation
- single agency investigation completed by the school which should involve the Senior HR advisor for the School.

If the matter does not meet the threshold for intervention by other agencies, but concerns remain about the conduct of a person in position of trust working with children, the school will take appropriate investigatory and, if appropriate, disciplinary action. Referrals to the Disclosure and Barring Service (DBS) will be made by the school when appropriate, in line with current guidance.

The fact that a member of staff offers to resign will not prevent the allegation procedure and any necessary disciplinary action reaching a conclusion.

### **Pupil allegations of abuse against another pupil**

Allegations of abuse from one pupil about another should be reported to the DSL or deputy DSL who will make the decision about whether a referral is needed to the First Response team and when parents should be informed.

### **E-Safety**

The growth of different electronic media in everyday life and an ever developing variety of devices including PC's, tablets, laptops, mobile phones, webcams etc place an additional risk on our children.

Internet chat rooms, discussion forums or social networks can all be used as a means of contacting children and young people with a view to grooming them for inappropriate or abusive relationships. The anonymity of the internet allows adults, often pretending to be children, to have conversations with children and in some cases arrange to meet them. Access to abusive images is not a 'victimless' act as it has already involved the abuse of children. The internet has become a significant tool in the distribution of indecent photographs of children and should be a concern to all those working with pupils at this school.

### **Sexting**

Sexting is when a young person takes an indecent images of them self and sends this to their friends or boy / girlfriends via mobile phones. [Sexting/what-is-sexting](#)

The problem is that once taken and sent, the sender has lost control of these images and these images could end up anywhere. They could be seen by your child's future employers, their friends or even by paedophiles. [CEOP](#) The CEOP Command's Thinkuknow programme provides resources, training and support for professionals who work directly with children and young people.

By having in their possession, or distributing, indecent images of a person under 18 on to someone else – young people are not even aware that they could be breaking the law as these are offences under the Sexual Offences Act 2003.

The best protection is to make pupils aware of the dangers through curriculum teaching particularly PSHE and sex and relationship education.

### **Protection is Prevention**

- Software is in place to minimise access and to highlight any person accessing inappropriate sites or information.
- Pupils will be encouraged to discuss openly their use of technology and anything which makes them feel uncomfortable. (If this results in child protection concerns the schools designated child protection person should be informed immediately)
- Pupils should not give out their personal details, phone numbers, schools, home address, computer passwords etc
- Pupils should adhere to the school policy on mobile phones.

The police will be involved if there is any criminal element to misuse of the internet, phones or any other form of electronic media.

### **Extremism**

As part of our safeguarding ethos we encourage pupils to respect the fundamental British values of democracy, the rule of law, individual liberty and mutual respect, and tolerance of those with different faiths and beliefs. We ensure that partisan political views are not promoted in the teaching of any subject in the school and where political issues are brought to the attention of the pupils, reasonably practicable steps have been taken to offer a balanced presentation of opposing views to pupils. Members of staff and governors attend PREVENT training and staff are made aware of how to report concerns regarding extremism through the designated government phone number: 020 7340 7264, part of the Channel programme, focusing support at an early stage people identified as being vulnerable to being drawn into terrorism.

## Resources

Section 175 of the Education Act 2002 puts an explicit duty on Governing Bodies to ensure their functions are exercised with a view to safeguarding and promoting the welfare of pupils. The governing body will therefore ensure that sufficient resources are made available to enable the necessary tasks to be carried out properly under Staffordshire Safeguarding Children Board procedures including attending meetings, collating and writing assessment reports, and staff training. The Governing Body will also ensure that all Governors have an understanding of safeguarding issues and those policies and procedures are in place in school to safeguard and promote the welfare of all pupils in the school. Safeguarding awareness will be addressed through the curriculum as appropriate to ensure all the pupils understand what is meant by safeguarding and how they can be safe. Staff will be made aware of the vulnerability of particular pupils and groups such as Looked After Children.

Key documents referred to in this policy are:

- Staffordshire Safeguarding Children Board Procedures (online)  
[www.staffsscb.org.uk/professionals/procedures/](http://www.staffsscb.org.uk/professionals/procedures/)
- 'Working Together to Safeguard Children' 2015 (DfE)
- Staffordshire Safeguarding Children Board Training Catalogue (online)  
[www.staffsscb.org.uk/professionals/Inter-Agencytraining/events/](http://www.staffsscb.org.uk/professionals/Inter-Agencytraining/events/)
- Dealing with Allegations of Abuse against Teachers and other Staff (DfE Oct 2012)
- Staffordshire Policy on the use of Restrictive Physical Interventions (including restraint) in mainstream schools
- The Children Act 1989 and 2004
- Education Act 2002
- Woodhouse Academy Whistle Blowing policy (copy to be obtained from the school office)
- Staffordshire e-safety Tool Kit
- Keeping Children Safe in Education 2016

## Links with other school policies

1. This policy document should also be considered within the context of other policies and documents relating to our work with children and young people such as: Whistle Blowing Policy, Behaviour & Rewards Policy including anti-bullying, E-Safety, Equalities, PSHE curriculum, staff code of conduct.

**The Designated Senior Person for Child Protection (DSP) in this school is:** Mrs C Butler

**The Deputy Designated Child Protection Person(s) in this school is/are :** Mr P Reynolds, Mrs D Farr and Mrs K Aldington

**The Nominated Governor for Safeguarding is:** Andrea Millington

**The Chair of Governors is:** Mrs C Hamnett

Further advice on Safeguarding matters can also be obtained from:

**Staffordshire Safeguarding Advice Service**

Support and advice for education safeguarding matters that are of a non-urgent nature and do not require immediate referrals or sit clearly outside the remit of the local support team – 01785 895836.

Julie Astall – Designated Officer - 01785 278958

[julie.astall@staffordshire.gov.uk](mailto:julie.astall@staffordshire.gov.uk)

First Response Team including LADO advice: 0800 1313126.

Emergency Duty Team (for out of office hours referrals for children and vulnerable adults) 0845 6042886

LST Co-ordinator: Shirley Hayes – [shirley.hayes@staffordshire.gov.uk](mailto:shirley.hayes@staffordshire.gov.uk)

Biddulph Social Services: 01782 297810

Newcastle Social Services: 01782 296810

Staffordshire Vulnerable Adults referral contact details (for schools where pupils may be over the age of 18 years and have a physical or sensory impairment; drug or alcohol problems; mental health problem; or learning disability and may not be able to protect themselves from harm or abuse) - 0845 604 2719 or EDT number above

School Nurse: Amanda Horton – 0300 404 2986 ext 2560