



# Woodhouse Academy

Shaping Futures Together.

Newsletter 8th  
March 2024



## Diary Dates for Parents Spring Term 2024

**Monday 11th March 2024:**

Mock SATs Week

**Monday 11th March 2024:**

Science Fortnight

**Monday 11th March 2024:**

Year 7 Arete Residential

**Wednesday 13th March 2024:** Easter Bingo

**Thursday 14th March 2024:**

PI Day

**Friday 15th March 2024:**

Comic Relief

**Monday 18th March 2024:**

Science Fortnight

**Monday 18th March 2024:**

Year 8 Parents Evening

**Tuesday 19th March 2024:**

KS3 Rewards Event

**Wednesday 20th March 2024:**

KS2 Rewards Event

**Wednesday 20th March**

**2024:** Easter menu Theme day

**Friday 22nd March 2024:**

Science Fair

**Friday 22nd March 2024:**

School closes for Easter at 3.35pm

Hello everyone

A busy week in school!

- Whole-school assembly: Miss Parkes presented a brilliant assembly on Monday morning about careers week, what certain jobs entail and how much the skills required for positions have changed over the years. A big thanks to her for that.
- Maths and English: the 'carousels' took place on Monday and Tuesday and our year 6s, along with the staff, worked so hard. A tough, but worthwhile, day. Well done to all of you.
- Easter Egg Day: a huge thanks to all those that sent in the Easter eggs in aid of our Easter Bingo - there were a lot of them!!
- World Book Day: this is always a favourite time of year, especially for the English department! Many thanks to Miss Aldington and the rest of the English team for organising this, our fabulous students - who looked brilliant - and all parents and carers who helped with the dressing up preparation.
- Next week: again, our week is incredibly full - mock SATs for year 6, Arete residential for a number of our year 7s, PI maths day on Thursday, Mr Baddeley and 7C are raising funds for Comic Relief on Friday and science fortnight begins!!
- Robotics Club: A small number of our year 8s attended the regional competition with Mr Reynolds, Mr Challinor and Mr Sumner on Thursday. They competed against high schools, 6<sup>th</sup> form colleges and private schools. And they smashed it!!! They were overall winners so now travel to Cambridge later in the year for the finals. Amazing all of you - well done.
- Football Friday: On Friday 8<sup>th</sup> March, Woodhouse Academy took part in the Biggest Ever Football Session. This is a National Campaign that aims to get as many girls playing football across the country on the same day, promoting equal rights across the sport. Our students competed in an Inter-house competition (Monday 18<sup>th</sup> March for Y6) where they had the opportunity to showcase their football skills and represent their house with pride. It was great to see our Y7 & 8 Football Leaders help run the tournament, passing on their knowledge and inspiring the younger students of the school. We didn't forget our boys, they also played in a separate tournament and helped earn points for their house. Thank you for supporting boys! BIG shout out to Mrs Bowers and Mr Baddeley for organising.

I gave a headteacher award out this week to a student that Mr Baddeley had put forward. This was for showing real support for others when they were struggling and needed it. A wonderful example to set so I was really proud to present this.

Have a lovely weekend.

Mrs Farr



### REMINDERS FOR PARENTS:

**ABSENCES:** Can all absences, including a reason for the absence, please be reported by 9am on each day by contacting the dedicated absence line below;

**Tel:** 01782 973600 option 2, alternatively please email:

**absence@woodhouseacademy.staffs.sch.uk**

**SCHOOL COMMUNICATIONS TO PARENTS:** You can book school meals and top up dinner monies via the Arbor App. If you have pre booked a school meal on Arbor that is no longer needed can you please ensure it is cancelled via the App also.

**ARBOR PARENT PORTAL:** Don't forget you can check; homework, housepoints, trips, consents and many more via the portal. If you have any questions or problems with Arbor please don't hesitate to contact the school office.

**POLITE REMINDER:** Please can we ask parents to ensure that pupils come into school with all the resources needed for the day e.g. PE kit, cooking ingredients.

Thank you.

### EASYFUNDRAISING

Please remember to use easyfundraising every time you shop online. Over 7,000 brands will donate to us, including all the big names like eBay, John Lewis & Partners, Argos, ASOS, Expedia, M&S, Just Eat, Uswitch and many more! This means you can raise FREE donations for us no matter what you're buying.

If you haven't signed up to support us yet, it's easy and completely FREE. These donations really help us, so it would be great if you could take a moment to get started!

You can find our easyfundraising page here: [https://www.easyfundraising.org.uk/causes/woodhousemiddle/?utm\\_campaign=raise-more&utm\\_medium=email&utm\\_content=rm-en-e2](https://www.easyfundraising.org.uk/causes/woodhousemiddle/?utm_campaign=raise-more&utm_medium=email&utm_content=rm-en-e2)

Thank you!

### NHS SCHOOL NURSE DETAILS

Please see links below for the School Nurse website;

<https://www.mpft.nhs.uk/services/health-visiting-and-school-nursing/staffordshire-clinics/drop-schedule-5-19>

[Health Visiting and School Nursing :: Midlands Partnership Foundation Trust \(mpft.nhs.uk\)](https://www.mpft.nhs.uk/services/health-visiting-and-school-nursing/staffordshire-clinics/drop-schedule-5-19)

### PRE LOVED UNIFORM SHOP

Uniform 'take away' stock: We have been running an after-school event for parents and students who may need additional uniform stock. This is all in a good condition and free for anyone. However, we have not had much of a response to this so, going forward, we will still keep this stock in school and any parent can contact the office if they would like to check what we have.

### SAFETY REMINDER

Please can you remind your children about riding their bikes and scooters safely, especially outside the school gates.

We have received 2 reports about children riding their scooters into the road which have resulted in a near miss with cars since the new year.

The number of parked cars, cars pulling out and pedestrians is obviously very high before and after school.

Please remind your children to walk with their bikes and scooters in congested areas and not ride into or across the road.

Thank you for your support.

# From the Staff

## Woodhouse Academy – Whole School Spellings

Night	Perceiving	Prophet
Occupancy	Pilfering	Raw
Often	Precious	Receivable
Old-fashioned	Pregnancy	Referring
Overambitious	Profit	Reign

## Shout outs!

Shout out for Liam K who very kindly loaned David J his bike for Bikeability.

Thank you to everyone auditioned this week for Woodhouse's got Talent! They were brilliant and we have a hard job on our hands picking just some to go through to the live finals. KS3 auditions will be next week and we are very excited to see the talent. The final list will be up the last week of term outside Mrs Wills' classroom. Well done everyone!

Brilliant hard work on Tuesday this week for our carousel day 6.3. You absolutely smashed it and I am super proud. Great work! From Mrs Wills



Please click on the link to see the updates from the Science, DT and Food department: <https://sway.office.com/hFrmU01VB8Pt71JT?ref=Link>

We would like to say a huge thank you for the Easter egg donations on Wednesday, they will make fantastic prizes for the Easter bingo next Wednesday.



Italian lessons at Italian Club have got under way. The students can now say their name, a few numbers, ask where the toilet is and if someone could please repeat what they said, as well as say what nationality they are. They have also had an introduction to the alphabet and to Italian phonics (sounds), to help with their pronunciation.

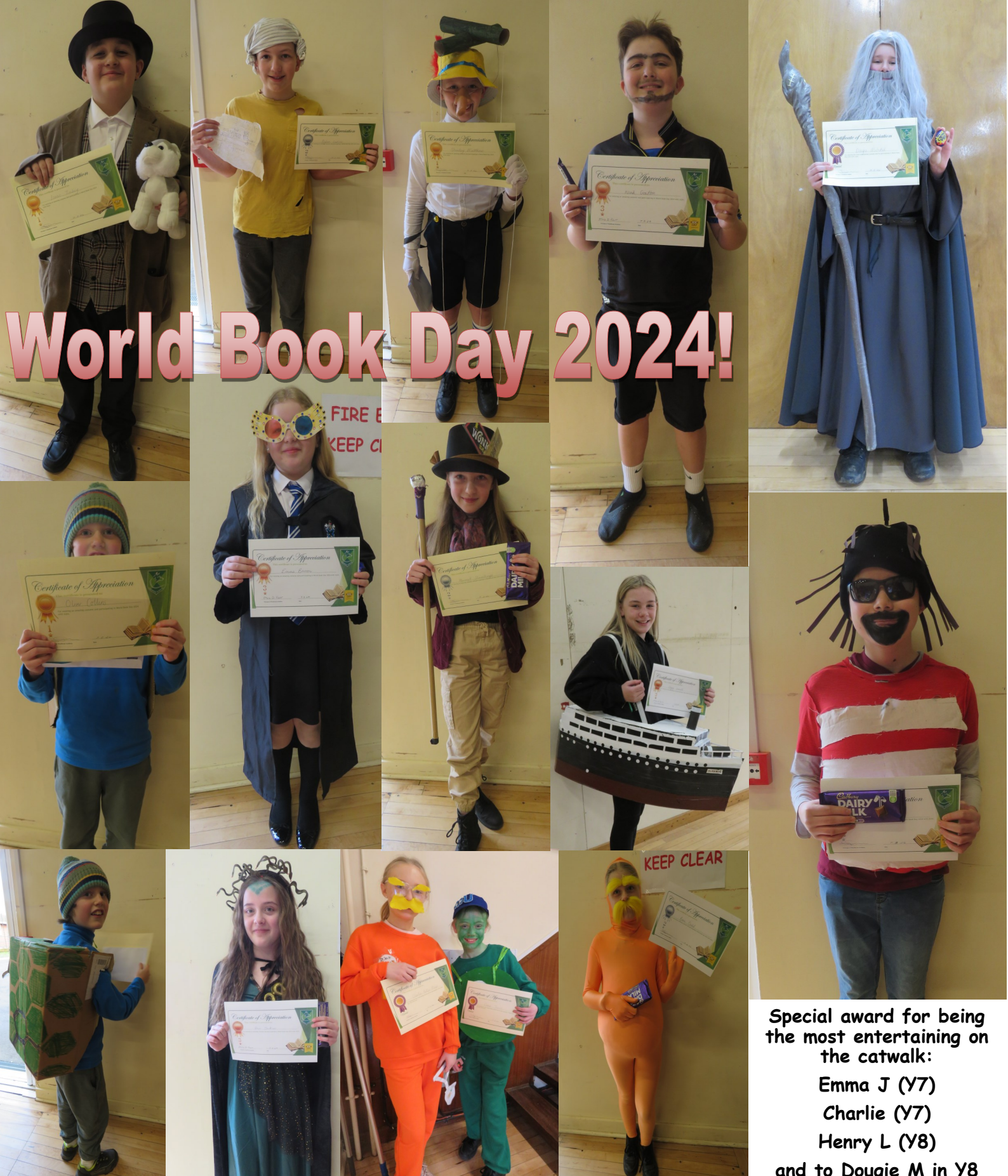
Don't forget to ask your MFL teacher for the Duolingo classroom code, which means you can view your progress as well as your classmates', as the members of Italian Club are doing! When you set up your DL account, you need to use the format SURNAME then INITIAL OF YOUR FIRST NAME then @woodhouseacademy.staffs.sch.uk . You need to find the 'Duolingo for Schools' section and enter the classroom code there.

And remember to practise your Spanish/German on Linguascope.com as this is what Woodhouse Academy has subscribed to for you. It will help you to learn more and retrieve the words more quickly.

**Viel Glück / mucha suerte!**







Special award for being the most entertaining on the catwalk:  
 Emma J (Y7)  
 Charlie (Y7)  
 Henry L (Y8)  
 and to Dougie M in Y8 for attention to detail on his costume

**This years winners are:**

★ ★ ★ ★ ★ ★ ★ ★ ★ ★ ★ ★ ★ ★ ★ ★  
 ★ Year 5 ★  
 ★ 1st - Oliver C ★  
 ★ 2nd - Beau D ★  
 ★ 3rd - Emma B ★  
 ★ ★ ★ ★ ★ ★ ★ ★ ★ ★ ★ ★ ★ ★ ★ ★

★ ★ ★ ★ ★ ★ ★ ★ ★ ★ ★ ★ ★ ★ ★ ★  
 ★ Year 6 ★  
 ★ 1st - Isaac T ★  
 ★ 2nd - Harriet S ★  
 ★ 3rd - Erin J ★  
 ★ ★ ★ ★ ★ ★ ★ ★ ★ ★ ★ ★ ★ ★ ★ ★

★ ★ ★ ★ ★ ★ ★ ★ ★ ★ ★ ★ ★ ★ ★ ★  
 ★ Year 7 ★  
 ★ 1st - Stan M ★  
 ★ 2nd - Dylan L ★  
 ★ 3rd - Daisy E ★  
 ★ ★ ★ ★ ★ ★ ★ ★ ★ ★ ★ ★ ★ ★ ★ ★

★ ★ ★ ★ ★ ★ ★ ★ ★ ★ ★ ★ ★ ★ ★ ★  
 ★ Year 8 ★  
 ★ 1st - Taryn P ★  
 ★ 2nd - Noah H ★  
 ★ 3rd - Noah G ★  
 ★ ★ ★ ★ ★ ★ ★ ★ ★ ★ ★ ★ ★ ★ ★ ★











# Woodhouse Academy

## Presents



Easter

**BINGO**



**Wednesday 13th March**

**Doors open from 6pm**

**eyes down at 6:30pm**

**Please bring you own refreshments  
and don't forget your dabbers!**

**Friends— Prizes— Fun**





# Woodhouse Wall of Fame!



Thank you for allowing Theo P and Finn D to attend the Dutch Open SAMBO Championships 2024.

They were selected to represent GB at the event and proved why they had earned that privilege. Out of over 350 participants overall, Theo won the bronze medal in his weight class (where he was 5kg lighter than the other boys in his group).

Finn took home the silver medal in his weight group after narrowly losing the gold medal contest by two only points.

They both represented their Country, Club and School amazingly in their conduct and sportsmanship.

Team GB overall took home 14 medals, which in itself is an achievement as the UK is one of the only countries that does not have a nationally funded development program.

Finn and Theo both train out of Cheshire SAMBO in Congleton.

**Amazing Well Done!**



Woodhouse Academy  
Woodhouse Lane  
Biddulph  
Stoke on Trent  
ST8 7DR  
Tel: 01782 973600

**Teacher of Maths – Fixed Term to cover maternity leave**  
**Full time – £30,000-£46,525**  
**2<sup>nd</sup> September 2024 to 18<sup>th</sup> July 2025**

Woodhouse Academy is a successful Middle School of over 450 pupils, set in a semi-rural location on the outskirts of Biddulph, Staffordshire. The school runs a secondary style timetable and subjects are taught by specialist teachers throughout – from Year 5 to Year 8. Pupils enjoy coming to school, are enthusiastic about learning and are challenged to achieve their best.

We are seeking to appoint a skilled teacher to join our experienced Maths team and to teach across KS2 and KS3.

The successful candidate will demonstrate:

- support for the Values ethos of the school
- the ability to inspire and enthuse learners
- the commitment to raising achievement for all
- a positive approach to teamwork
- the desire to contribute to the wider life of the school

You will join a supportive and friendly team in a school with a strong emphasis on respect and wellbeing. We run a fully accredited ECT programme in partnership with The Golden Thread Teaching School Hub. Our professional development is highly personalised in order to improve knowledge and skills and enable progression into middle and senior management.

Applications are welcome from ECTs, experienced, primary and secondary trained teachers.

*This school is committed to safeguarding and promoting the welfare of children and young people and expect all staff and volunteers to share this commitment.*

*This position is subject to a criminal records check from the Disclosure & Barring Service including a Children's Barred List check which will require you to disclose all criminal convictions. Pre-employment checks will be carried out in line with Keeping Children Safe in Education.*

To apply for this post please download an application form from the academy website and send to [recruitment@woodhouseacademy.staffs.sch.uk](mailto:recruitment@woodhouseacademy.staffs.sch.uk) - Visits prior to application are most welcome. Please contact the school office on 01782 973600

**Closing date: Wednesday 13<sup>th</sup> March 2024**

**Interviews: Tuesday 19<sup>th</sup> March 2024**



Woodhouse Academy  
Woodhouse Lane  
Biddulph  
Stoke on Trent  
ST8 7DR  
Tel: 01782 973600

**Temporary Learning Support Assistant**  
**32.5 Hours per week, Term time, plus 6 days**  
**12 months fixed term – to start 3<sup>rd</sup> June 2024**

**Grade 3 - £17,630 actual salary**

The Governors wish to appoint a learning support assistant to provide classroom support across the whole school in line with the Inclusion Policy. This will include delivering specific SEN provision for children with specific and complex educational needs.

The successful candidate will be an excellent classroom practitioner with high expectations of behaviour and learning, and have the ability to enthuse and inspire all children and be willing to go that extra mile.

Successful applicants will receive a full induction training package to enable them to comply with the academy's policies and procedures. This School is committed to safeguarding and promoting the welfare of children and young people and expects all staff and volunteers to share this commitment.

*This school is committed to safeguarding and promoting the welfare of children and young people and expect all staff and volunteers to share this commitment.*

*This position is subject to a criminal records check from the Disclosure & Barring Service including a Children's Barred List check which will require you to disclose all criminal convictions. Pre-employment checks will be carried out in line with Keeping Children Safe in Education.*

To apply for this post please visit the school website  
[recruitment@woodhouseacademy.staffs.sch.uk](mailto:recruitment@woodhouseacademy.staffs.sch.uk)

Closing date: Wednesday 13<sup>th</sup> March 2024  
Interviews: Wednesday 20<sup>th</sup> March 2024



**Woodhouse Academy**

Woodhouse Lane

Biddulph

Stoke on Trent

ST8 7DR

Tel: 01782 973600

Email: [recruitment@woodhouseacademy.staffs.sch.uk](mailto:recruitment@woodhouseacademy.staffs.sch.uk)

## **Cleaner**

**Part time - To start as soon as possible**

**Permanent – 13.33 Hours per week**

**Term time + 4 x weekly contracted hours during school closure periods**

**£11.59 per hour**

**Grade 1 £7,496 actual salary**

The Governors are looking for an enthusiastic and committed person to join our cleaning team. If you are a reliable individual committed to providing a valuable service in cleaning and maintaining schools, we would like to hear from you.

Successful applicants will receive a full induction training package to enable them to comply with the academies catering policies and procedures.

Woodhouse Academy is committed to safeguarding and promoting the welfare of children and young people and expects all staff and volunteers to share this commitment.

This position is subject to a criminal records check from the Disclosure & Barring Service including a Children's Barred List check which will require you to disclose all criminal convictions. Pre-employment checks will be carried out in line with Keeping Children Safe in Education.

To apply for this post please visit the academy website [www.woodhouseacademy.staffs.sch.uk](http://www.woodhouseacademy.staffs.sch.uk)

**Closing date: Monday 11<sup>th</sup> March 2024**

**Interviews: Wednesday 13<sup>th</sup> March 2024**



**Woodhouse Academy**

Woodhouse Lane

Biddulph

Stoke on Trent

ST8 7DR

Tel: 01782 973600

Email: [recruitment@woodhouseacademy.staffs.sch.uk](mailto:recruitment@woodhouseacademy.staffs.sch.uk)

## **Catering Assistant**

**Term time plus 3 days during school closure periods**

**To start as soon as possible**

**Permanent – 8 hours per week**

**Grade 2 – SCP 3 Actual pay £4,204 pa**

The Governors are looking for an experienced, proactive, hands-on catering assistant to support the catering manager within Woodhouse Academy. The role includes general kitchen duties, food preparation, serving customers and pot wash duties.

Successful applicants will receive a full induction training package to enable them to comply with the academy's catering policies and procedures.

Woodhouse Academy is committed to safeguarding and promoting the welfare of children and young people and expects all staff and volunteers to share this commitment.

This position is subject to a criminal records check from the Disclosure & Barring Service including a Children's Barred List check which will require you to disclose all criminal convictions. Pre-employment checks will be carried out in line with Keeping Children Safe in Education.

To apply for this post please visit the academy website [www.woodhouseacademy.staffs.sch.uk](http://www.woodhouseacademy.staffs.sch.uk)

**Closing date: Monday 8<sup>th</sup> April 2024**

**Interviews: Wednesday 10<sup>th</sup> April 2024**



# all M

to

## CELEBRATE LIFE

FIND OUT MORE ON  
9TH MARCH!



# 8TH JUNE 2024

EVENT HELD BY SHAKES ON THE ROCKS, WICKENSTONE FARM ST87NW



# EASTER FUN!

## FREE



# Holiday Activities and Food

for children and young people aged  
5-16 who get free school meals\*

**Booking opens: 4pm, Monday 11th March 2024**

**[staffordshire.gov.uk/holidayactivities](https://staffordshire.gov.uk/holidayactivities)**

#HAF2024 | Free holiday activities and food this Easter

If your child is eligible for a free place on the HAF programme, they will receive a letter with a HAF code.

Booking opens at 4pm on 11th March

Activities run 25 March - 5 April

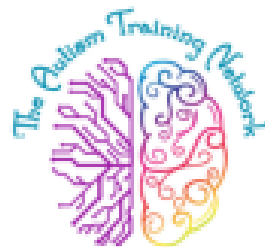
Quote your HAF code to get a free place

Activities include dodgeball, cooking, horse-riding, dance, football, swimming, arts and crafts, bush craft and lots more! Your child will get a chance to make new friends, have fun and enjoy a healthy meal.

If your child is not eligible for a free place but wants to attend, most of the clubs offer paid places too!

Find out more on the Staffordshire County Council website





## **Parent/Carer Autism Online Workshops**

Whether your child is awaiting a diagnosis or has already been diagnosed, these workshops are a great opportunity to learn more about Autism & ask questions within a supportive group of other parents & carers.

- **Week 1 - An introduction to Autism**

An opportunity to explore what Autism is, the many strengths and the differences that make each child so wonderfully unique.

- **Week 2 - Communication**

Identifying what communication is and the different communication methods that may be helpful for Autistic children.

- **Week 3 - Sensory Processing**

Explaining the 8 sensory systems, how the environment can impact on a child with sensory processing differences/challenges and strategies to meet an individual's sensory needs.

- **Week 4 - Pathological Demand Avoidance**

A look into the interesting subject of PDA, how this may present and what is the best approach to take to avoid conflict.

**Workshops will be held on a Monday evening from 7:30-8:30pm via Zoom.**

You can benefit from all 4 workshops for just £100 and you will receive a certificate of attendance after the final workshop.

We are only running the 4-week programme in February, March and April.

**To book your place...**Email [enquiries@theautismtrainingnetwork.com](mailto:enquiries@theautismtrainingnetwork.com) with the month you would like to attend, and you will be sent the link to book on.





MONDAYS	TUESDAYS	WEDNESDAYS	THURSDAYS	FRIDAYS	SATURDAYS	SUNDAYS
Biddulph Library, 'Bounce and Rhyme', 10:30-11am	Biddulph Youth & Community Zone, Church Road Community Café in partnership with Oasis Community Church 9:30am to 11am, tea, coffee and refreshments.	The Green Tree Food Club & Tea Room, 72 High Street Community larder 10am to 3pm Soup and Sandwich (10am to 1pm).	Biddulph Local People's Group at Biddulph Youth & Community Zone, Church Road. Over 50's Social Group 10am to 12pm. Arts & crafts, board games. £2.00 refreshments and materials included.	Staffordshire Moorlands Childrens Centre, 'Wake Up Shake Up Breakfast Group' 9:30am to 11am, Healthy breakfast for parents/ carers and children under 3 yrs.		
Stoke-on-Trent Foodbank St John's Church, Knypersley 11am to 1pm	Biddulph Local People's Group, Biddulph Town Hall Over 50's Social Group 10am to 12pm. Arts & crafts, board games. £2.00 refreshments and materials included. Free hot food 12-1pm.	Biddulph Town Hall Beth Johnson 10:30am to 12pm Bereavement Group 2 <sup>nd</sup> Wednesday of each month, group meal (after session).	Biddulph Town Hall Approach Dementia- carer support café, 10:30-12:30, 2 <sup>nd</sup> Thursday of each month.	Biddulph Library, Coffee Morning Cheesy oatkakes, 10am to 12pm	The Green Tree Food Club & Tea Room, 72 High Street Community larder 10am to 3pm	
St Lawrences Church, Congleton Road 'Nibble and Natter' 10:30-1:30pm, soup lunch, board games and refreshments.		Biddulph Town Hall 'Feast and Flicks' Warm Light Lunch 12:30 to 1:30pm followed by a film.	Biddulph Youth & Community Zone, Church Road. Community Pantry 11:30am to 1:30pm, free food collection. Fruit & Veg— 12:30pm to 5:30pm, £3.50 a box. Pre-order by 1pm previous Tuesday.	Victoria Centre, Station Road Friday Coffee Morning & Christian Aid Stalls 9:30am to 11:30am, Hot drink & a snack.		
Biddulph Youth & Community Zone, Church Road Youth Club 6:30pm to 8:30pm - £1.50 inc refreshments. Aimed at ages 9+, sports, craft, café, PS4 etc.	The Green Tree Food Club & Tea Room, 72 High Street Community larder 10am to 3pm	Staffordshire Moorlands Children's Centre, Albert Street 'Back 2 Basics' 1-2.30pm. Free drop-in session for families with little ones; refreshments provided.	Christ Church, Biddulph Moor 'Brunch Club' 10.30-1pm	Biddulph Youth & Community Zone, Church Road Youth Club 6:30pm to 8:30pm— £1.50 inc refreshments. Aimed at ages 9+, sports, craft, café, PS4 etc.		Oasis Community Church Worship, Biddulph Town Hall 10:45am Refreshments served before and following worship. Adult Worship, children and youth groups and a creche area.
	Victoria Centre, Station Road Film Club, includes tea/coffee, 2pm on the 2nd Tuesday of each month.	Biddulph Youth & Community Zone, Church Road Indoor Bowling 1:30pm to 3:30pm, £1.50 inc. refreshments.	Biddulph Youth & Community Zone, Church Road. SMILE Over 50's Social Group 1:30pm to 3:30pm, £1.50 inc refreshments.	Twilight Market Biddulph Town Hall Friday 1 December 3:30pm to 7:30pm Refreshments provided - pay what you can. Please check <a href="http://www.biddulph.co.uk">www.biddulph.co.uk</a> for 2024 dates.		Biddulph Methodist Church, Station Road Worship at 10:45am, tea coffee and biscuits.
		Dementia Friendly Cinema Biddulph Town Hall Wednesday 14 December 1:30pm, includes tea/coffee and cake in the interval; accessible for people with dementia and open to everyone.	Oasis Youth Club (7-14years), Gospel Mission Hall, Church Road 6pm to 8pm, £1.00 entry and free refreshments.	The Green Tree Food Club & Tea Room, 72 High Street Community larder 10am to 3pm		Life Stream Church. Worship at 10:30am, tea coffee and biscuits to follow.
		English Martyr's RC Church, Church Road 11am to 2pm, free hot drinks, soup and sandwiches.	Stoke-on-Trent Foodbank English Martyrs Church, 6-8pm			Hill Top Methodist Church, Worship at 10:45am, tea coffee and biscuits to follow.
			Biddulph Methodist Church 'Dementia Voices' (fortnightly) 2-3:30pm			St Lawrence's Church, Traditional Service 9:15am, Contemporary service 11am (with children's and youth groups) tea/coffee refreshments between services.
						English Martyrs Church Mass, 9-10am

93 Bus Service Fares

Adult day ticket- £2.00  
Young person (under 19) day ticket- £1.00

- You can:
- Use it as a return ticket to attend one of these sessions, or access other services in the town.
  - Make a break in your journey
  - Use it for a recreational/ social ride around the route

There are also many volunteering opportunities available with these groups, which would appreciate your support. Volunteering can help you learn new skills, meet new people, gain confidence, build relationships and make a difference. Skills and knowledge you acquire could also help you move towards paid employment.

Biddulph Works Together 2023-4 A Warm Welcome



### Biddulph Works Together 2023-4

#### A Warm Welcome

#### Useful Numbers



### Biddulph Works Together 2023-4

#### A Warm Welcome

#### Introduction

Biddulph Town Council (Community Help Point)	01782 498480
<i>The team at the Town Hall can make referrals to the Foodbank and provide advice on cost-of-living issues.</i>	
Biddulph Library	01782 485491
Staffordshire Moorlands Children's Centre, Albert Street	01782 297970
Biddulph Local People's Group	07898 322998
Biddulph Methodist Church & Victoria Centre (am only)	01782 513218
Biddulph Youth & Community Zone, Church Road	01782 244288
Hill Top Methodist Church, Chapel Lane	01782 513218
Life Stream Church, Newpool Road	01782 515122
New Road Methodist Church, Hot Lane	01782 513218
St John's Church, Knypersley	01782 512240
Christ Church, Biddulph Moor	01782 512240
Oasis Community Church	07736 953860
St Lawrence's Parish Church, Congleton Road (am only)	01782 513891
Beth Johnson Foundation	07867 003313
The Green Tree Food Club & Tea Room, 72 High Street	01782 852131
Approach Dementia Support	01782 214999
Citizens Advice- Local Advice Line	0808 278 7876

For the second year, Biddulph Town Council and partners are working to offer warm friendly spaces and free food opportunities, creating a network of places where Biddulph people can come together to try new things and seek support or advice. All groups offer a friendly welcome, with safeguarding policies and food hygiene rules in place.

There is lots of information about local groups and services here: <https://www.biddulph.co.uk/biddulph-directory/> or you can collect a paper copy of the Biddulph Directory from Biddulph Town Hall.

This leaflet contains information about how to access food via the different services and the Foodbank, but you can also contribute food items. The Stoke on Trent Foodbank welcomes food donations. They can be dropped at Sainsburys on Wharf Road in Biddulph, at your local church or at Biddulph Town Hall.

There is lots of information available on the Staffordshire County Council website about how you can live well in your own home: [www.staffordshire.gov.uk](http://www.staffordshire.gov.uk)

Type in 'Happy at Home' for more advice, which will also link to energy saving tips and local support agencies.



We've taken care to ensure the accuracy of this information; no responsibility can be accepted for errors or omissions. If you feel some information is incorrect or details have changed, please let us know. We are keen to support as many people in our town as possible. Please let us know if you can't get to these activities or would like something different.



*“The opportunity to learn an instrument offers something very special that can last a lifetime”*

# Learn a Musical Instrument at School!



- Outstanding specialist music tuition
- Tutors are DBS checked and first class musicians
- Learn almost any instrument including voice
- Independently rated an “outstandingly effective service” offering “outstanding value”
- Free access to ensembles and performances
- Not-for-profit organisation with a small, friendly and efficient team

[www.musicforlife.org.uk](http://www.musicforlife.org.uk)

[admin@musicforlife.org.uk](mailto:admin@musicforlife.org.uk)

01244 728 922

**INSPIRE  
CREATE  
PERFORM**

MUSIC  
MARK

**future  
talent**  
inspiring young musicians



@Musicforlife1234



@musicforlifesch



@MusicforLifeSCH



Awards for  
Young Musicians



Families' Health and Wellbeing



Midlands Partnership  
NHS Foundation Trust  
*A Keele University Teaching Trust*

# School Nurse virtual drop in clinic

Every  
Thursday  
from  
3.30 - 4.30pm



The School Nurse is here to help your child feel healthy, happy and safe during their school years and to get the best from their education. If you have any concerns about their health and wellbeing please drop in to chat.

Join the link and talk to a School Nurse.

We provide a confidential and friendly service

[mpft.live/schoolnurse](https://mpft.live/schoolnurse)



parents/carers of children aged 0-19 who live in Staffordshire.

◉ Rectangular Snip

Get advice from our Public Health nurses (Health Visitors and School Nurses).

**TEXT: 07520 615722**



Feeding and  
nutrition



Child  
development

Parenting advice  
and support



Emotional health  
and wellbeing



Behaviour  
difficulties



Family  
health



We might inform someone if we were concerned about your safety but we would usually speak to you first. Your messages are stored and can be seen by other health care staff who follow the same confidentiality rules. We aim to reply to you within one working day and you should get an immediate message back to confirm we have received your text. Texts will only be seen between 9am and 5pm. If you need help before you hear back from us contact your GP, nearest walk in centre or dial 111. Our text number does not receive voice calls or MMS picture messages. We support messaging from UK mobile numbers only (which does not include messages sent from landlines, international mobile numbers and some 'number masking' mobile apps). To prevent the health visitor from sending messages to you, text STOP to our number. Messages are charged at your usual rates.