



Woodhouse Academy

Shaping Futures Together.

Newsletter 3rd
May 2024



Diary Dates for Parents Summer Term 2024

Monday 6th May 2024 -
Bank Holiday—School Closed

Saturday 11th May 2024 -
Italy Trip

Monday 13th May 2024 -
Year 6 SATs week

Tuesday 21st May 2024 -
KS2 Rewards Celebration
(Invite Only)

Thursday 23rd May 2024 -
KS3 Rewards Celebration
(Invite Only)

Thursday 23rd May 2024 -
National Sandwich Week
Theme Menu

Friday 24th May 2024 -
Year 8 HPV Vaccination

Friday 24th May 2024 -
School Closes at 3.35pm for
Half Term

Hello everyone. I hope you have all had a good week.

- Whole-school assembly: Mr Baddeley gave a brilliant assembly on Monday, talking about mental health and what makes you happy. This is so important for everyone in the school so many thanks to him for that.
- Music curriculum: as you know, our lovely Mrs Washington returned this week and the staff and students are delighted. I know she has been brilliant, as expected, and we welcome her return as she has been missed very much.
- Year 8 football: a team of our year 8 boys visited Leek this week for their football fixture. Well done for taking part all of you - great match!
- BHS: Laura Simcock from Biddulph High School visited this week to meet some of our students. You were, as always, a credit to Woodhouse so well done.
- Bank Holiday: a reminder that we have an extended break this weekend - welcomed by all - and will not be open on Monday. Students will return on the Tuesday.
- Italy: a small group of our year 8s will be flying off to Italy next Friday with Frau Taylor and Mr Baddeley. This is a really exciting trip and I know, from past experience, that our pupils will have a fabulous time.

Wishing you all a great weekend - hopefully the sun will come out for us!

Mrs Farr



REMINDERS FOR PARENTS:

ABSENCES: Can all absences, including a reason for the absence, please be reported by 9am on each day by contacting the dedicated absence line below;

Tel:01782 973600 option 2, alternatively please email:

absence@woodhouseacademy.staffs.sch.uk

SCHOOL COMMUNICATIONS TO PARENTS: You can book school meals and top up dinner monies via the Arbor App. If you have pre booked a school meal on Arbor that is no longer needed can you please ensure it is cancelled via the App also.

ARBOR PARENT PORTAL: Don't forget you can check; homework, housepoints, trips, consents and many more via the portal. If you have any questions or problems with Arbor please don't hesitate to contact the school office.

POLITE REMINDER: Please can we ask parents to ensure that pupils come into school with all the resources needed for the day e.g. PE kit, cooking ingredients.

EASYFUNDRAISING

Please remember to use easyfundraising every time you shop online. Over 7,000 brands will donate to us, including all the big names like eBay, John Lewis & Partners, Argos, ASOS, Expedia, M&S, Just Eat, Uswitch and many more! This means you can raise FREE donations for us no matter what you're buying.

If you haven't signed up to support us yet, it's easy and completely FREE. These donations really help us, so it would be great if you could take a moment to get started!

You can find our easyfundraising page here: https://www.easyfundraising.org.uk/causes/woodhousemiddle/?utm_campaign=raise-more&utm_medium=email&utm_content=rm-en-e2

NHS SCHOOL NURSE DETAILS

Please see links below for the School Nurse website;

<https://www.mpft.nhs.uk/services/health-visiting-and-school-nursing/staffordshire-clinics/drop-schedule-5-19>

[Health Visiting and School Nursing :: Midlands Partnership Foundation Trust \(mpft.nhs.uk\)](https://www.mpft.nhs.uk/services/health-visiting-and-school-nursing/staffordshire-clinics/drop-schedule-5-19)

PRE LOVED UNIFORM SHOP

Uniform 'take away' stock: We have been running an after-school event for parents and students who may need additional uniform stock. This is all in a good condition and free for anyone. However, we have not had much of a response to this so, going forward, we will still keep this stock in school and any parent can contact the office if they would like to check what we have.

The Stationery Store

Open for pupils every lunchtime in the foyer



Large glue stick	£1	Black pen	10p
Pencil case	80p	Purple pen	10p
Rubber	40p	Pencil	10p
Bookmark	25p	Hair bobbles	10p



From the Staff

The Careers and Enterprise have asked us to share this survey to provide the Careers Hub and individual schools/colleges with valuable insight into the level of knowledge and confidence of parents to support students with technical and vocational routes.

<https://www.surveymonkey.com/r/woodhouse-academy-parents-24>

A big well done to the Y8 football team who beat Churnet View 1-0 on Monday. It was an extremely close game in which both schools had chances to take the victory but thanks to some quick thinking from Henry and Enzo during a throw in, Charlie was able to grab the only goal of the game. The win now sees Woodhouse finish top of group A and will now progress to the District League final!



Miss Phillips welcoming our 'visitor' this week!

School lunches

We are seeing an increase of lunch accounts coming into arrears. Please can we ask that you settle any outstanding balances and ensure that your child/ren have enough credit on their account each week. To check if your child can get free school meals please follow this link <https://www.gov.uk/apply-free-school-meals> alternatively if your child is not eligible for free school meals and you require any support in this area please contact the school office office@woodhouseacademy.staffs.sch.uk

Please click on the link to see the updates from the Science, DT and Food department: <https://sway.cloud.microsoft/Ch1jTVVgUt14nK9J?ref=Link>

Woodhouse Wall of Fame!



At the 'Calling You Out' competition at the weekend Daisy E placed 1st on solo , 3rd on her team and a call back on set solo .

Well Done Daisy!



At the 'Calling You Out' competition on Sunday Millie G 8m came 2nd in her team, 2nd in her duo and 3rd in set solo.

Well Done Millie!



Lacey Mai came 1st place in under 12 advanced freestyle solo and 1st place in her under 12 advanced set solo . 2nd place in her under 14 advanced duo and 2nd place in her over 16 advanced team with surge.

Well Done lacey Mai




Haven's team Calypso placed 3rd..!!! at the 'Calling You Out' competition last weekend .

MONDAYS	TUESDAYS	WEDNESDAYS	THURSDAYS	FRIDAYS	SATURDAYS	SUNDAYS
Biddulph Library, 'Bounce and Rhyme', 10:30-11am	Biddulph Youth & Community Zone, Church Road Community Café in partnership with Oasis Community Church 9:30am to 11am, tea, coffee and refreshments.	The Green Tree Food Club & Tea Room, 72 High Street Community larder 10am to 3pm Soup and Sandwich (10am to 1pm).	Biddulph Local People's Group at Biddulph Youth & Community Zone, Church Road. Over 50's Social Group 10am to 12pm. Arts & crafts, board games. £2.00 refreshments and materials included.	Staffordshire Moorlands Childrens Centre, 'Wake Up Shake Up Breakfast Group' 9:30am to 11am, Healthy breakfast for parents/ carers and children under 3 yrs.	The Green Tree Food Club & Tea Room, 72 High Street Community larder 10am to 3pm	Oasis Community Church Worship, Biddulph Town Hall 10:45am Refreshments served before and following worship. Adult Worship, children and youth groups and a creche area.
Stoke-on-Trent Foodbank St John's Church, Knypersley 11am to 1pm	Biddulph Local People's Group, Biddulph Town Hall Over 50's Social Group 10am to 12pm. Arts & crafts, board games. £2.00 refreshments and materials included. Free hot food 12-1pm.	Biddulph Town Hall Beth Johnson 10:30am to 12pm Bereavement Group 2 nd Wednesday of each month, group meal (after session).	Biddulph Town Hall Approach Dementia- carer support café, 10:30-12:30, 2 nd Thursday of each month.	Biddulph Library, Coffee Morning Cheesy oatcakes, 10am to 12pm	The Green Tree Food Club & Tea Room, 72 High Street Community larder 10am to 3pm	Biddulph Methodist Church, Station Road Worship at 10:45am, tea coffee and biscuits.
St Lawrence's Church, Congleton Road 'Nibble and Natter' 10:30-1:30pm, soup lunch, board games and refreshments.	Biddulph Youth & Community Zone, Church Road Youth Club 6:30pm to 8:30pm - £1.50 inc refreshments. Aimed at ages 9+, sports, craft, café, PS4 etc.	Biddulph Town Hall 'Feast and Flicks' Warm Light Lunch 12:30 to 1:30pm followed by a film.	Biddulph Youth & Community Zone, Church Road. Community Pantry 11:30am to 1:30pm, free food collection. Fruit & Veg— 12:30pm to 5:30pm, £3.50 a box. Pre-order by 1pm previous Tuesday.	Victoria Centre, Station Road Friday Coffee Morning & Christian Aid Stalls 9:30am to 11:30am, Hot drink & a snack.	The Green Tree Food Club & Tea Room, 72 High Street Community larder 10am to 3pm	Life Stream Church. Worship at 10:30am, tea coffee and biscuits to follow.
93 Bus Service Fares Adult day ticket- £2.00 Young person (under 19) day ticket- £1.00 You can: • Use it as a return ticket to attend one of these sessions, or access other services in the town. • Make a break in your journey • Use it for a recreational/ social ride around the route	The Green Tree Food Club & Tea Room, 72 High Street Community larder 10am to 3pm	Staffordshire Moorlands Children's Centre, Albert Street 'Back 2 Basics' 1-2.30pm. Free drop-in session for families with little ones; refreshments provided.	Christ Church, Biddulph Moor 'Brunch Club' 10.30-1pm	Biddulph Youth & Community Zone, Church Road Youth Club 6:30pm to 8:30pm— £1.50 inc refreshments. Aimed at ages 9+, sports, craft, café, PS4 etc.	Victoria Centre, Station Road Film Club, includes tea/coffee, 2pm on the 2nd Tuesday of each month.	Hill Top Methodist Church, Worship at 10:45am, tea coffee and biscuits to follow.
		Biddulph Youth & Community Zone, Church Road Indoor Bowling 1:30pm to 3:30pm, £1.50 inc refreshments.	Biddulph Youth & Community Zone, Church Road. SMILE Over 50's Social Group 1:30pm to 3:30pm, £1.50 inc refreshments.	Twilight Market Biddulph Town Hall Friday 1 December 3:30pm to 7:30pm Refreshments provided - pay what you can. Please check www.biddulph.co.uk for 2024 dates.		St Lawrence's Church, Traditional Service 9:15am, Contemporary service 11am (with children's and youth groups) tea/coffee refreshments between services.
		Dementia Friendly Cinema Biddulph Town Hall Wednesday 14 December 1:30pm, includes tea/coffee and cake in the interval; accessible for people with dementia and open to everyone.	Oasis Youth Club (7-14years), Gospel Mission Hall, Church Road 6pm to 8pm, £1.00 entry and free refreshments.	The Green Tree Food Club & Tea Room, 72 High Street Community larder 10am to 3pm		English Martyrs Church Mass, 9-10am
		English Martyr's RC Church, Church Road 11am to 2pm, free hot drinks, soup and sandwiches.	Biddulph Methodist Church 'Dementia Voices' (fortnightly) 2-3:30pm			

There are also many **volunteering opportunities** available with these groups, which would appreciate your support. Volunteering can help you learn new skills, meet new people, gain confidence, build relationships and make a difference. Skills and knowledge you acquire could also help you move towards paid employment.

Biddulph Works Together 2023-4 A Warm Welcome



Biddulph Works Together 2023-4 A Warm Welcome Useful Numbers

Biddulph Town Council (Community Help Point)	01782 498480
<i>The team at the Town Hall can make referrals to the Foodbank and provide advice on cost-of-living issues.</i>	
Biddulph Library	01782 485491
Staffordshire Moorlands Children's Centre, Albert Street	01782 297970
Biddulph Local People's Group	07898 322998
Biddulph Methodist Church & Victoria Centre (am only)	01782 513218
Biddulph Youth & Community Zone, Church Road	01782 244288
Hill Top Methodist Church, Chapel Lane	01782 513218
Life Stream Church, Newport Road	01782 515122
New Road Methodist Church, Hot Lane	01782 513218
St John's Church, Knypersley	01782 512240
Christ Church, Biddulph Moor	01782 512240
Oasis Community Church	07736 953860
St Lawrence's Parish Church, Congleton Road (am only)	01782 513891
Beth Johnson Foundation	07867 003313
The Green Tree Food Club & Tea Room, 72 High Street	01782 852131
Approach Dementia Support	01782 214999
Citizens Advice- Local Advice Line	0808 278 7876



Biddulph Works Together 2023-4 A Warm Welcome Introduction

For the second year, Biddulph Town Council and partners are working to offer warm friendly spaces and free food opportunities, creating a network of places where Biddulph people can come together to try new things and seek support or advice. All groups offer a friendly welcome, with safeguarding policies and food hygiene rules in place.

There is lots of information about local groups and services here: <https://www.biddulph.co.uk/biddulph-directory/> or you can collect a paper copy of the Biddulph Directory from Biddulph Town Hall.

This leaflet contains information about how to access food via the different services and the Foodbank, but you can also contribute food items. The Stoke on Trent Foodbank welcomes food donations. They can be dropped at Sainsburys on Wharf Road in Biddulph, at your local church or at Biddulph Town Hall.

There is lots of information available on the Staffordshire County Council website about how you can live well in your own home: www.staffordshire.gov.uk

Type in 'Happy at Home' for more advice, which will also link to energy saving tips and local support agencies.



We've taken care to ensure the accuracy of this information; no responsibility can be accepted for errors or omissions. If you feel some information is incorrect or details have changed, please let us know. We are keen to support as many people in our town as possible. Please let us know if you can't get to these activities or would like something different.

“The opportunity to learn an instrument offers something very special that can last a lifetime”

Learn a Musical Instrument at School!



- Outstanding specialist music tuition
- Tutors are DBS checked and first class musicians
- Learn almost any instrument including voice
- Independently rated an “outstandingly effective service” offering “outstanding value”
- Free access to ensembles and performances
- Not-for-profit organisation with a small, friendly and efficient team

www.musicforlife.org.uk

admin@musicforlife.org.uk

01244 728 922

**INSPIRE
CREATE
PERFORM**

MUSIC
MARK

future
talent
inspiring young musicians



@Musicforlife1234



@musicforlifesch



@MusicforLifeSCH



Families' Health and Wellbeing



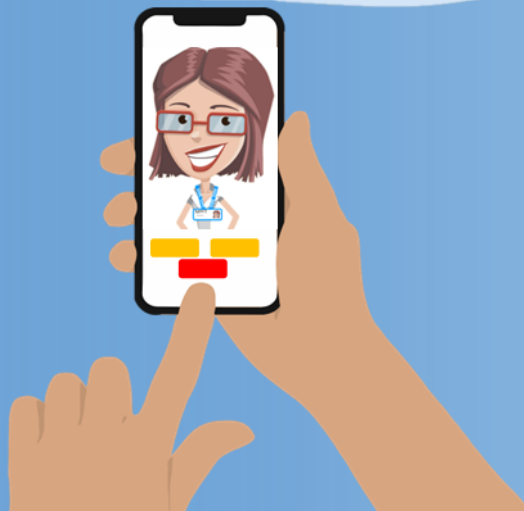
Midlands Partnership
NHS Foundation Trust
A Keele University Teaching Trust

School Nurse virtual drop in clinic

Every
Thursday
from
3.30 - 4.30pm



The School Nurse is here to help your child feel healthy, happy and safe during their school years and to get the best from their education. If you have any concerns about their health and wellbeing please drop in to chat.



Join the link and talk to a School Nurse.

We provide a confidential and friendly service

mpft.live/schoolnurse



parents/carers of children aged 0-19 who live in Staffordshire.

Rectangular Snip

Get advice from our Public Health nurses (Health Visitors and School Nurses).

TEXT: 07520 615722



Feeding and nutrition



Child development



Parenting advice and support



Emotional health and wellbeing



Behaviour difficulties



Family health

We might inform someone if we were concerned about your safety but we would usually speak to you first. Your messages are stored and can be seen by other health care staff who follow the same confidentiality rules. We aim to reply to you within one working day and you should get an immediate message back to confirm we have received your text. Texts will only be seen between 9am and 5pm. If you need help before you hear back from us contact your GP, nearest walk in centre or dial 111. Our text number does not receive voice calls or MMS picture messages. We support messaging from UK mobile numbers only (which does not include messages sent from landlines, international mobile numbers and some 'number masking' mobile apps). To prevent the health visitor from sending messages to you, text STOP to our number. Messages are charged at your usual rates.